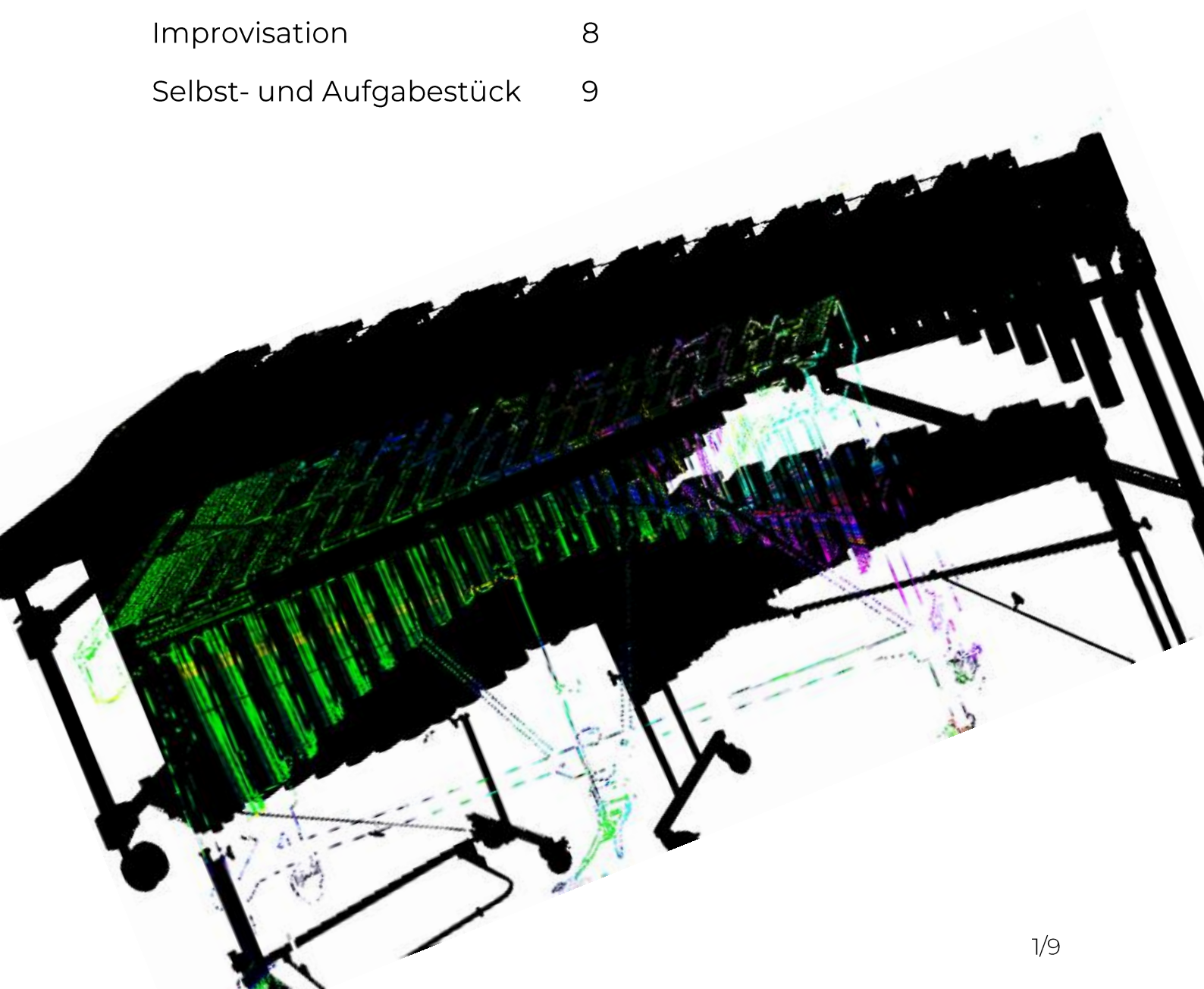


mCheck 3 Mallets

Technik	2
Tonleitern	4
Chromatik	5
Dynamik	5
Rhythmus	6
Improvisation	8
Selbst- und Aufgabestück	9



Hinweis: Achte auf deine Handhaltung, fester Stand mit beiden Füßen auf dem Boden und lasse die Schultern locker hängen.

Schau darauf, dass der Schlägel beim Spielen über den Resonatoren ist und spiele aus dem Handgelenk.

Technische Übungen

Nr. 1

Tempo: ♩ = 80 – 100

Musical score for exercise Nr. 1, consisting of four staves of music in 4/4 time. The first staff starts with a treble clef and a 4/4 time signature. The music consists of eighth-note patterns. The second staff is marked with a '3' above it, indicating a triplet. The third and fourth staves continue the eighth-note patterns.

Nr. 2

Tempo: ♩ = 80 – 100

Musical score for exercise Nr. 2, consisting of four staves of music in 4/4 time. The first staff starts with a treble clef and a 4/4 time signature. The music consists of eighth-note patterns. The second staff is marked with a '3' above it, indicating a triplet. The third and fourth staves continue the eighth-note patterns.

Nr. 3

Tempo: ♩ = 80 – 100

Musical score for Nr. 3, 4/4 time, tempo 80-100. It consists of four staves of music. The first staff starts with a treble clef and a 4/4 time signature. The music is a continuous eighth-note pattern. The second staff is marked with a '3' above the first measure, indicating a triplet. The third staff is marked with a '5' above the first measure, indicating a quintuplet. The fourth staff is marked with a '7' above the first measure, indicating a septuplet. The piece ends with a double bar line.

Nr. 4

Tempo: ♩ = 80 – 100

Musical score for Nr. 4, 4/4 time, tempo 80-100. It consists of four staves of music. The first staff starts with a treble clef and a 4/4 time signature. The music is a continuous eighth-note pattern. The second staff is marked with a '3' above the first measure, indicating a triplet. The third staff is marked with a '5' above the first measure, indicating a quintuplet. The fourth staff is marked with a '7' above the first measure, indicating a septuplet. The piece ends with a double bar line.

Tonleitern

Es müssen alle Tonleitern im Schema **A/B/C** vorbereitet werden.

Die **a-moll** Tonleitern müssen nur im Schema **A** gespielt werden.

Tonleitern Dur: **C**

F – Bb – Eb – Ab

G – D – A – E

Tonleitern moll: **a**

Schema **A**

Tempo: frei



Schema **B**

Tempo: frei

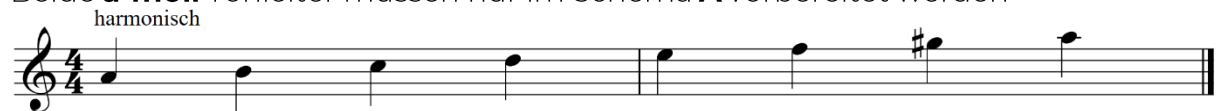


Schema **C**

Tempo: frei



Beide **a-moll** Tonleiter müssen nur im Schema **A** vorbereitet werden



Chromatik

Die ganze Übung wird verlangt.

Musical score for Chromatik exercise, consisting of three staves of music in 4/4 time. The first staff contains measures 1-4, the second staff contains measures 5-8, and the third staff contains measures 9-12. The music features chromatic scales with triplets and slurs.

Dynamik

Die ganze Etüde wird verlangt.

Roll all Half Notes

Musical score for Dynamik exercise, consisting of four staves of music in 4/4 time. The music features half notes with dynamic markings and slurs. The first staff contains measures 1-4, the second staff contains measures 5-8, the third staff contains measures 9-12, and the fourth staff contains measures 13-16. The music includes dynamic markings such as *mp*, *mf*, *f*, *p*, *pp*, and *ppp*, as well as a *rit.* marking.

Improvisation

Bossa Nova Feeling


Hier in einer 2-5-1 Kadenz gehalten.

A – Dur für den A Teil, G – Dur für den B Teil.

Das Playalong kann unter: <http://www.vam-ag.ch/mcheck> gedownloadet werden.

Play 4 times


A



Bm⁷ E⁷ Amaj⁷ A⁶

Staff A: Treble clef, 4/4 time signature, four measures of rests. Chord symbols are placed above each measure: Bm⁷, E⁷, Amaj⁷, and A⁶.

B



Am⁷ D⁷ Gmaj⁷ G⁶

Staff B: Treble clef, 4/4 time signature, four measures of rests. Chord symbols are placed above each measure: Am⁷, D⁷, Gmaj⁷, and G⁶.

Aufgabestück

Der/die Schüler/-in wählt in Absprache mit der Lehrperson, eines der Pflichtstücke aus.

Die Pflichtstücke befinden sich auf www.vam-ag.ch/mcheck

Das Pflichtstück soll stufengerecht interpretiert werden.

Titel:

Selbstwahlstück

Das Wahlstück kann zu einem Playalong oder einer live Begleitung vorgetragen werden.

Der/die Schüler/-in oder die Lehrperson, bringt das Stück in entsprechender Audioform (CD/mp3/ etc.) zur Prüfung mit oder organisiert eine entsprechende Begleitung, falls nötig.

Hier muss ein Stück gespielt werden, das notiert ist. Keine Improvisation.

Titel:
